



RENTAL SPECIFICATIONS

Colonia: Lib. Manuel Zavala

Bedrooms: 1

1/2 Bath: 1

Land: 50m² (538ft²)

Const.: 50m² (538ft²)

Agent

Elena Licea

415.103.6097

elena@realtysanmiguel.com

Jessica Licea

415.566.2543

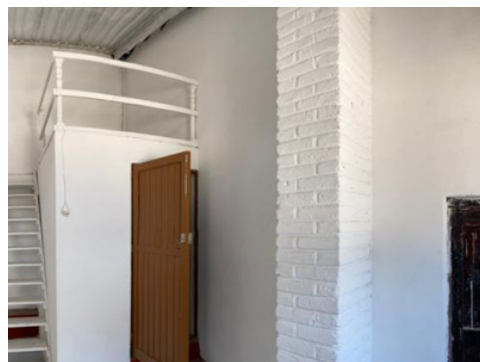
jessica.janet@realtysanmiguel.com

Bodega de 50 mts en renta cerca de Plaza La Luciernaga

ID: 5300 **Monthly:** \$ 5,000 mxn

Its location is something to highlight, it is only 10 minutes from downtown San Miguel de Allende. It has access through the different highway entrances: Querétaro, Celaya and Dr. Mora. Near the property, there is the Commercial Plaza "La Luciérnaga", the "Mac" hospital, private schools, prestigious residential, municipal presidency, SAPASMA, to mention a few.

...



Services Available

Water