

Privada Encanto Modelo Turmalina

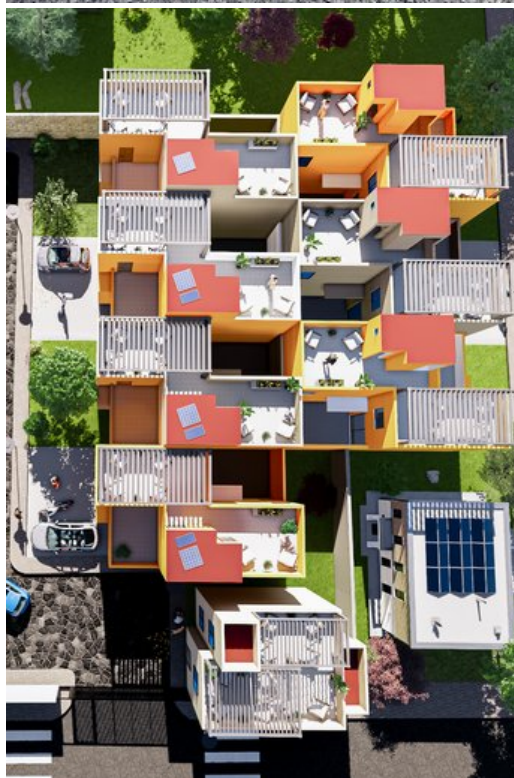
\$3,190,000 MXN

 **San Luis Rey**

MAIN FEATURES

- Ref: 10932
- Bedrooms: 3
- Bathrooms: 3
- Half Bathrooms: 2
- Size: 1,399 ft²
- Size Land: 1,399 ft²

Beautiful Turmalina model home for sale in San Luis Rey, a rapidly growing neighborhood just 10 minutes from downtown San Miguel de Allende. This 3-level home features 3 bedrooms with en-suite bathrooms, a rooftop terrace with stunning views of the iconic parish and surrounding mountains, parking for 2 cars, and spacious living areas. Located in Privada Encanto, a private gated community of only 8 homes. Move-in ready at an excellent price! Turmalina model 130 m² lot / 130 m² construction 3 levels 3 bedrooms with en-suite bathrooms 3.5 bathrooms Ground floor bedroom Private rooftop



Gloria Farias
415.153.5059
gloria@realtysanmiguel.com