

Casa Emma

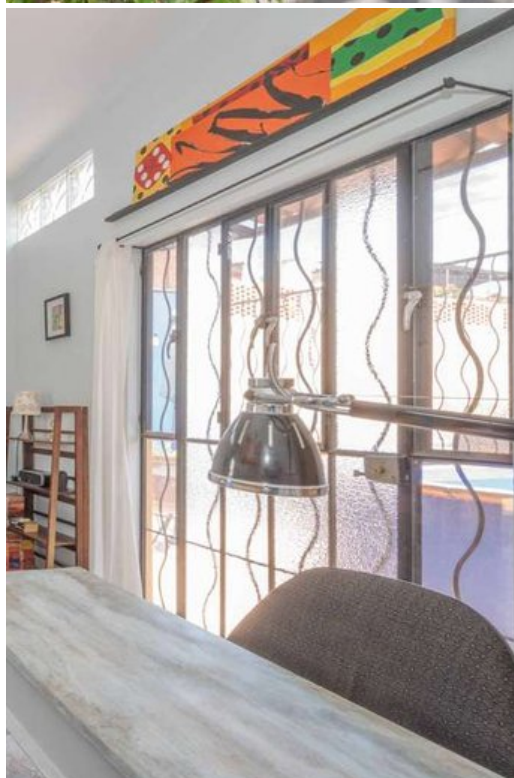
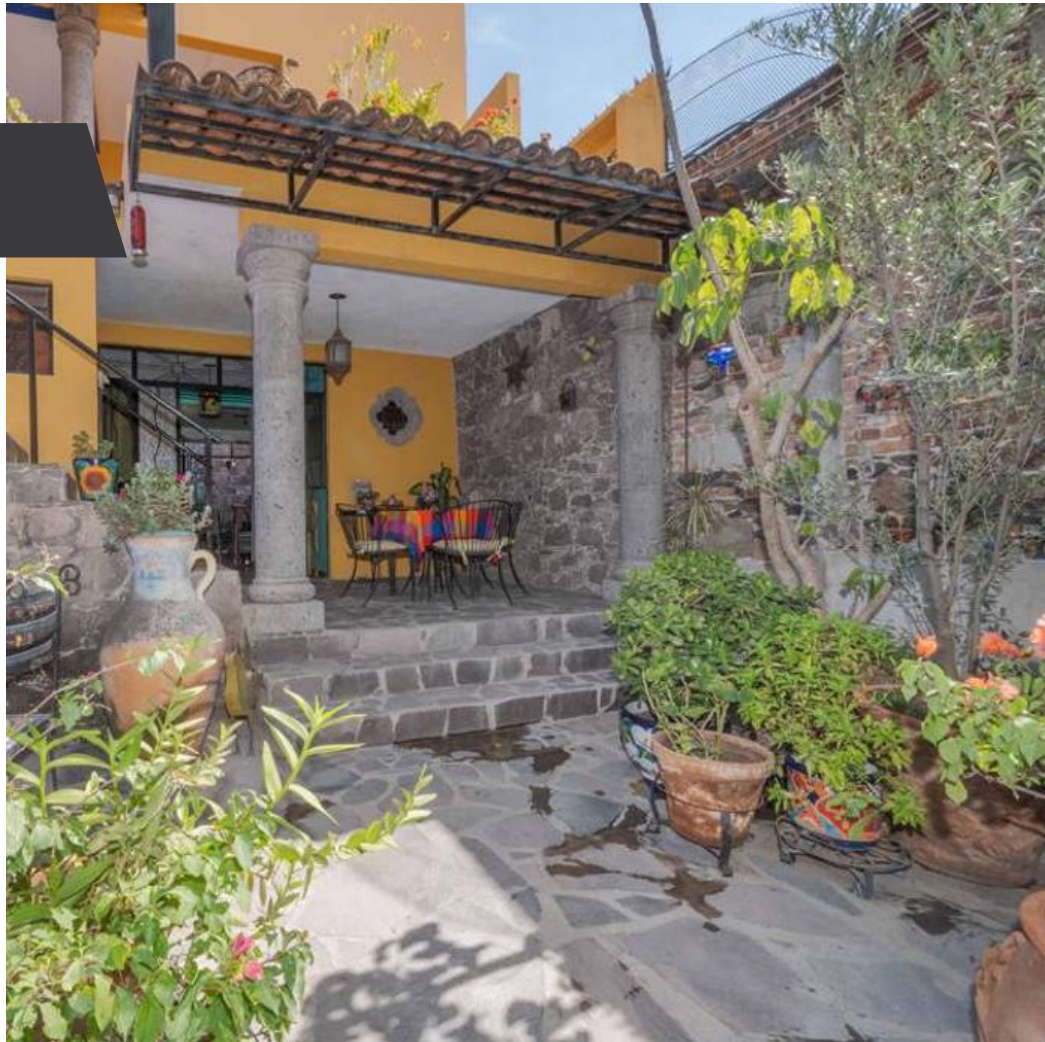
\$7,500,000 MXN

 **Guadalupe**

MAIN FEATURES

- Ref: 9365
- Bedrooms: 3
- Bathrooms: 3
- Size: 1,657 ft²
- Size Land: 1,625 ft²

Casa Emma is located in Colonia Guadalupe, one of the most desirable neighborhoods in San Miguel de Allende. Its easy flat-walking access to El Jardin Principal, San Juan Market, and the three-block Mercado de Artesanías, is less than a 15-minute walk. It is also less than a 15-minute walk to Zeferino Gutierrez Park and Fabrica Aurora along the tree-lined, muraled Arroyo de las Cachinche's Walkway. This private and tranquil Turnkey property is set up as 3 Tiny Houses. Excellent Rental History. Built for potential future expansion. It can be adapted to be used in its entirety, making it a wonderful family home. Or, it can be rented separately, making it an excellent business



Arturo Nava
415.109.9638
arturo@realtysanmiguel.com