

Condo 203

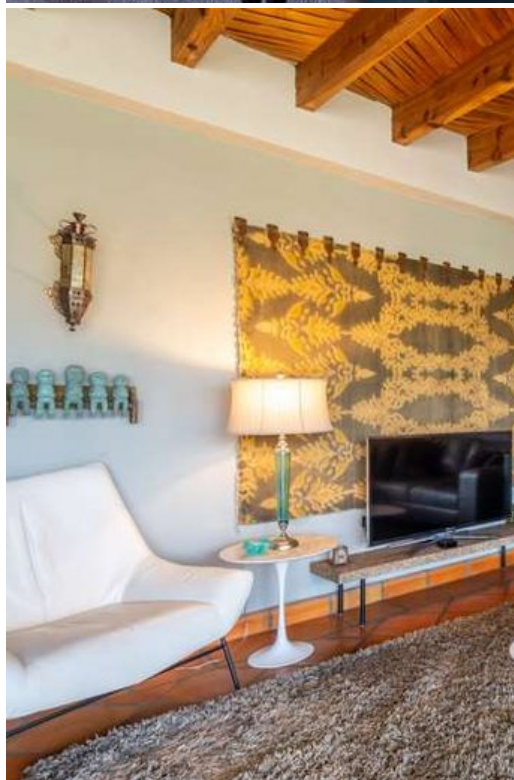
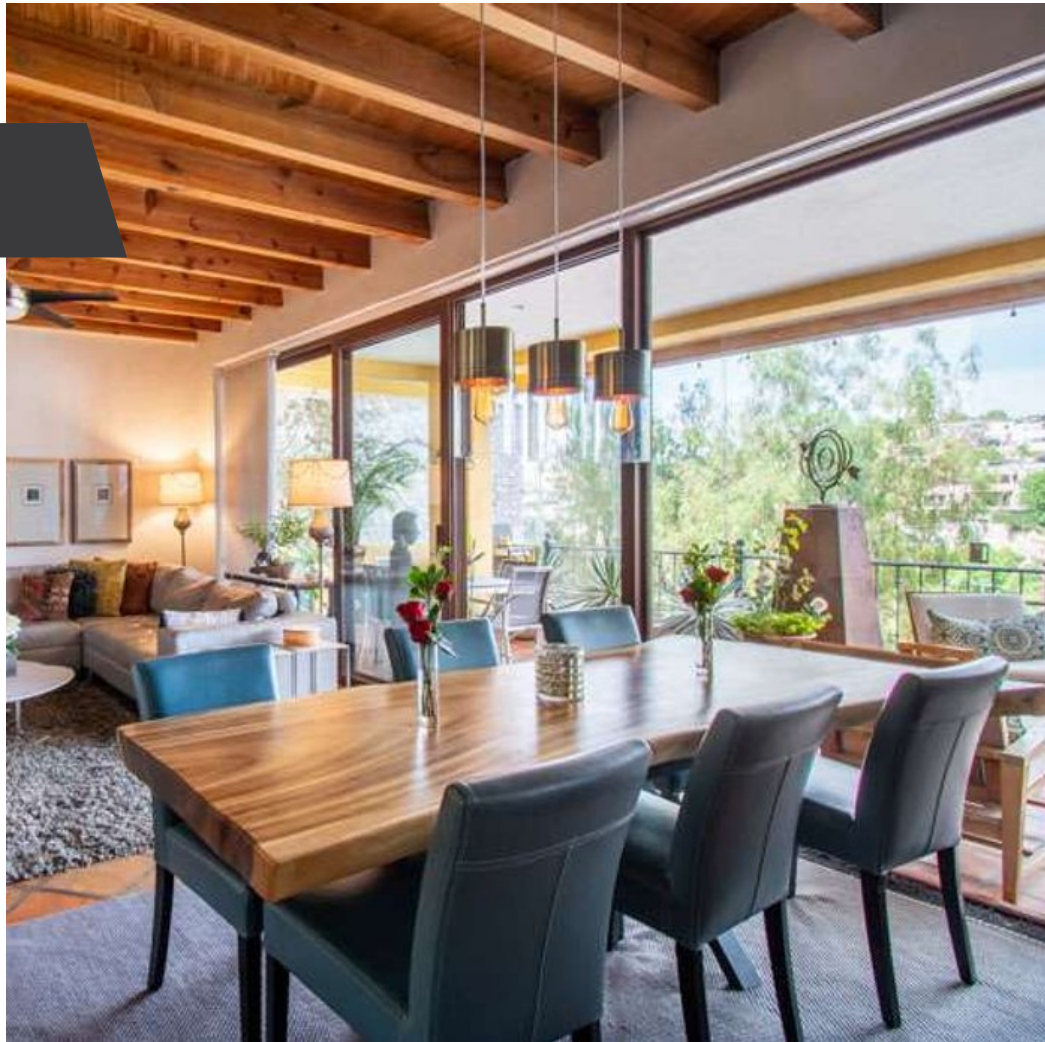
\$435,000 USD

Capilla de Piedra

MAIN FEATURES

- Ref: 6887
- Bedrooms: 3
- Bathrooms: 3
- Half Bathrooms: 1
- Size: 2,615 ft²
- Size Land: 1,861 ft²

This beautiful one-level condo, located in the 2nd section of the project on the -2 level, boasts 3 ensuite bedrooms, each with its own private bathroom. As you enter the condo, you'll be impressed by the open layout design that combines the kitchen, dining, and living areas, all looking out into the terrace with stunning views of Atascadero.



Lucero Taboada
415.112.4856
lucero@realtysanmiguel.com