

## Condo 2 Cholula

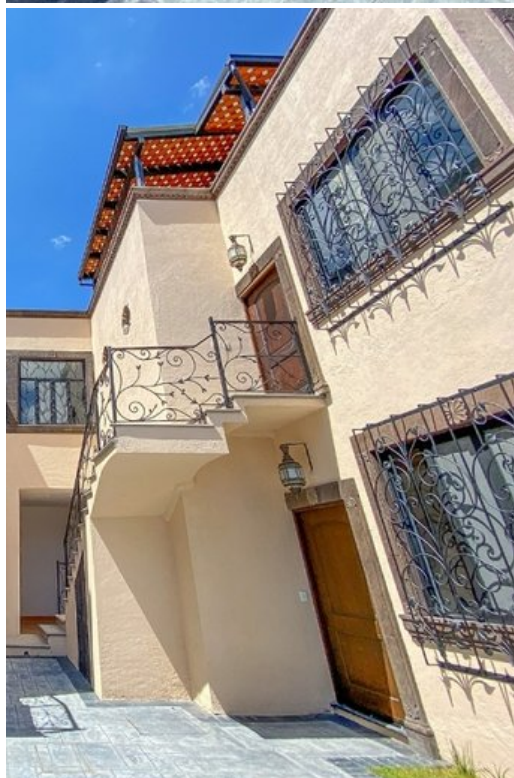
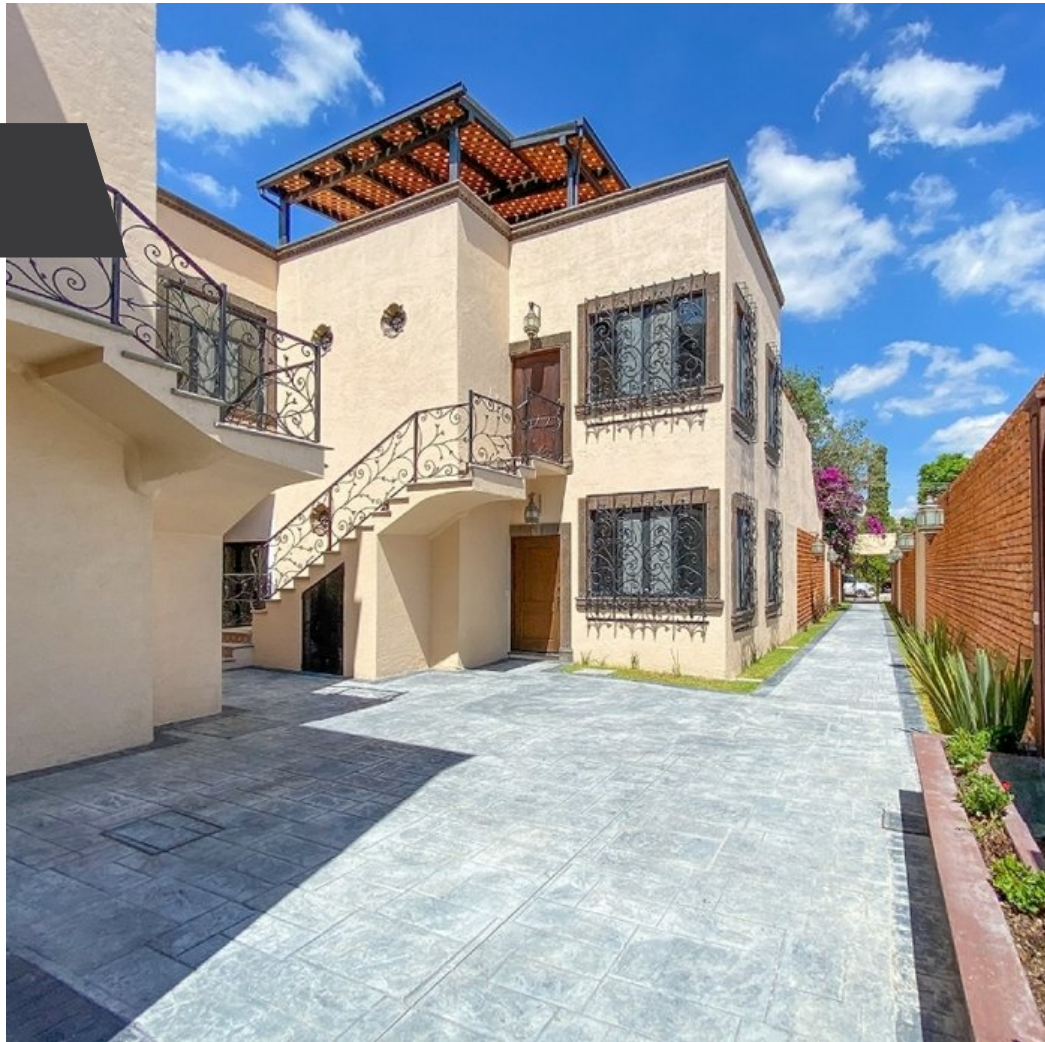
**\$218,000 USD**

 **San Antonio**

### MAIN FEATURES

- Ref: 5900
- Bedrooms: 1
- Bathrooms: 1
- Half Bathrooms: 1
- Size: 947 ft<sup>2</sup>
- Size Land: 947 ft<sup>2</sup>

There are 2 Upper Level condos and 2 on the Lower Level, each with private parking for one auto and easy access to each unit. The two light filled Upper Level condos have 2 bedrooms each with wall mounted gas heat and private tiled bathrooms plus a powder room.



Evelyn Jiménez  
55.4388.6917  
evelyn@realtysanmiguel.com